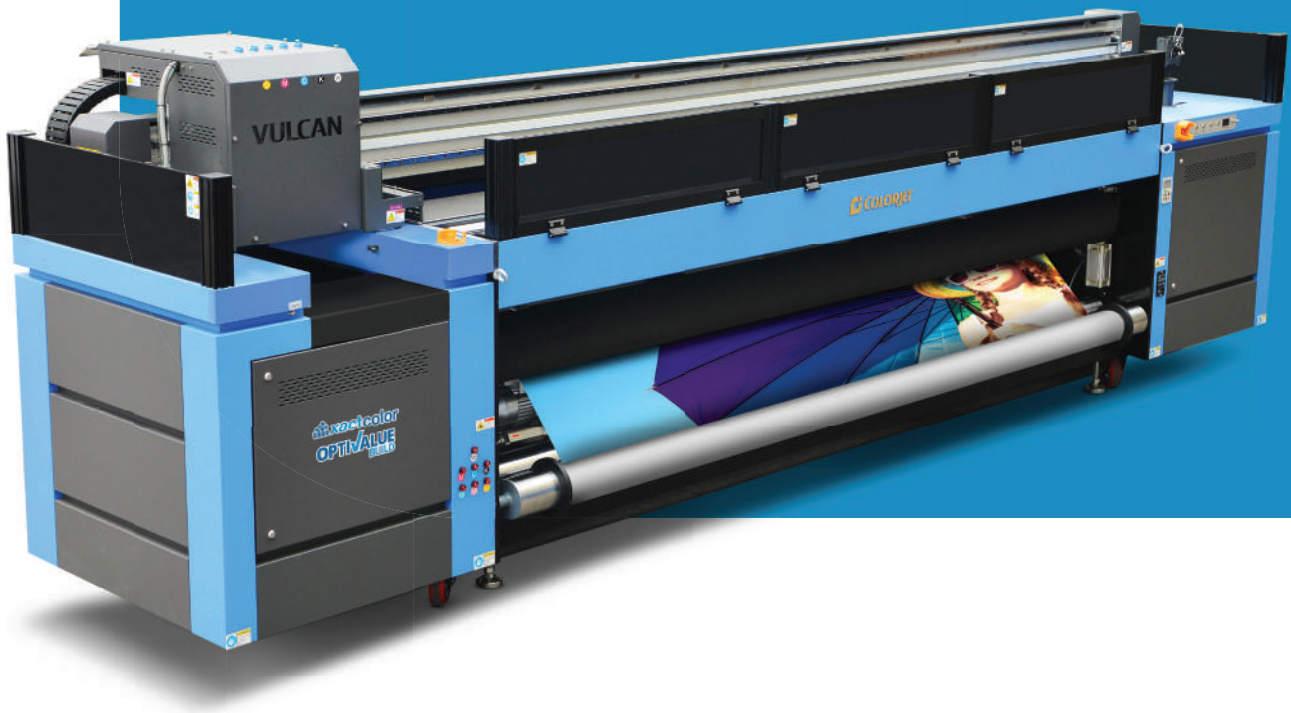


DIGITAL PRINT LEADERSHIP



*Maximum Applications
& Profitability for Signage &
Fabric Printing Businesses*

COLORJET: INDIA'S LARGEST MANUFACTURER OF DIGITAL INKJET PRINTERS

Whatever you can imagine, ColorJet has the gear to transform your imagination into reality. Since its inception in 1995, the ColorJet Group has been powered by over 1500 senior man-years of intensive digital print technology experience. As the leader in Inkjet technology, we offer state-of-the-art large-format printing solutions designed with exceptional speed, flexibility and quality.

The reliability and performance of ColorJet Group, the largest manufacturer of digital inkjet printers, can be seen and experienced in 50 countries worldwide. ColorJet provides versatile, high-quality, and heavy-duty digital signage printers to print on an astonishing range of substrates and take signage printing businesses to the next level.

The company maintains its operations via two manufacturing facilities and sales offices spread across seven countries, including India, Sri Lanka, Saudi, UAE and China. To date, ColorJet has installed and implemented over 6,000 of its printing solutions and products across 450 cities worldwide, backed by a strong 278 members team, of which almost 100 are in technical related functions. No wonder that apart from leading professionals, the Government of India has also recognized the technological innovation strength of ColorJet's R&D department.

With dependable, high quality and robust output, ColorJet users deliver time and again. Our capabilities ensure maximum business and growth for all associated with us.



**INDIA'S LARGEST
MANUFACTURER OF WIDE FORMAT
DIGITAL PRINTERS AWARD**

AT 7TH ANNUAL IMAGING
SOLUTION AWARDS



RISING STAR OF ASIA AWARD

AT THE INDO-ASEAN GLOBAL INVESTMENT
SUMMIT, BANGKOK, THAILAND



**MOST
TRUSTED
BRAND
OF INDIA
AWARD**

AT INDIAN BRAND
CONVENTION
BAM AWARDS 2017



- 1** Complete Range of Signage Printers
- 2** Consumer Focused 3E Product Design Philosophy : Economy, Efficiency & Eco Friendly
- 3** R&D Department Recognised by the Dept. of Science & Technology, Govt. of India
- 4** Strong Service & Training Infrastructure



UV

VULCAN

HIGH-SPEED 3.2 M ROLL-TO-ROLL
UV LED INKJET PRINTER

A PERFECT SOLUTION FOR INDOOR AND OUTDOOR APPLICATIONS



ColorJet **VULCAN** is a high speed 3.2 m roll-to-roll UV LED Inkjet printer. This back to back printing machine is used for printing banners, signage, billboards, terminal graphics, bus shelters, tradeshow graphics, window displays, backlit, wall graphics, building wraps, POP and POS graphics, etc. It is equipped with the capability to print 3-layer, 4-layer, and 5-layer printing. LED lamps and UV inks list this industrial UV printing machine.

Our UV roll to roll printer **VULCAN** let you experience unprecedented print speed, high-quality, and lucrative total cost of ownership. Built on a robust industrial production platform and never seen before automation, this industrial UV printing machine can print high volumes and withstands heavy-duty cycles without compromising on quality.



Linear Motor
Maglev Technology



20 Mm
Media Thickness



Auto Media
Height Detection
System



4 Zone
Vacuum System



Anti-crash
System



Honeycomb
Printer Core



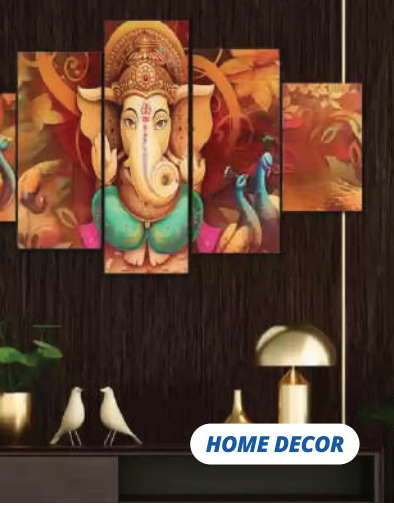
Anti-static
Ioniser



Upgraded Media
Handling System



LED Panel
Backlit Display



HOME DECOR



WALL GRAPHICS



SIGNAGE/TERMINAL GRAPHICS



TRADE SHOW GRAPHICS

SPECIFICATIONS

VULCAN 3201										
Model			V3201Y		V3201R			V3201R6		
Printing Technology			Drop-on-demand, Piezo Electric Inkjet on linear motion							
Print Heads			Industrial Grade Jetting Assemblies							
No. of Print Heads			2 to 7 (3.5 PL)		2 to 9 (7 PL)			2 to 9 (5 PL)		
Media	Width		3300 mm							
	Thickness		Maximum 10 mm with Liner							
	Roll Outer Diameter		Maximum 300 mm							
	Roll Weight		Maximum 150 Kgs							
	Core Diameter		2" & 3"							
Types			Ceiling Film, Vinyl, Advertising Banner, PET, Wall paper, Fabric and many more							
Printing Width			Maximum 3200 mm							
Inks	Types		UV Curable Ink							
	Colors		6 Colors (CMYK LC LM) + W (LC LM optional)		6 Colors (CMYK LC LM) + White (LC LM optional) + V					
Printing Resolution (Dots Per Inch)			Maximum 2400 dpi							
Distance Accuracy			Error of less than ±0.3 % of distance travelled							
Connectivity			High Speed USB 3.0							
Power Requirements			AC 220 V ±10%, 30 A, 50/60 Hz							
Dimensions (Printer only)			5320 x 1100 x 1650mm (LxWxH)							
Dimensions (With Packing)			5830 x 1600 x 2090mm (LxWxH)							
RIP Software			Onyx (ColorJet Edition)							
Weight			2740 Kgs N.W., 2940 Kgs G.W.							
Environmental	Power ON		Temperature: 18 to 28°C. Humidity: 35 to 80% RH (Non-condensing)							
	Power OFF		Temperature: 5 to 40°C. Humidity: 20 to 80% RH (Non-condensing)							
Print Speed (Sqm/hr)										
			Kyocera		Gen 5			Gen 6		
			1 Row	1 Row	1 Row	2 Row	3 Row	1 Row	2 Row	3 Row
Modes	Print DPI	Passes	2 Heads	4 Heads	2 Heads	4 Heads	6 Heads	2 Heads	4 Heads	6 Heads
Mode 1	635 x 600	4	-	-	-	-	-	29	53	73
Mode 2	635 x 900	6	-	-	19	34	51	24	43	56
Mode 3	635 x 1200	8	-	-	16	28	43	18	33	44
Mode 4	960 x 900	6	35	-	-	-	-	-	-	-
Mode 5	960 x 1200	8	27	-	-	-	-	-	-	-
Mode 6	960 x 1800	12	17	-	-	-	-	-	-	-
Mode 8	960 x 1200	4	-	65	-	-	-	-	-	-
Mode 9	960 x 1800	6	-	43	-	-	-	-	-	-
Mode 10	960 x 2400	8	-	32	-	-	-	-	-	-



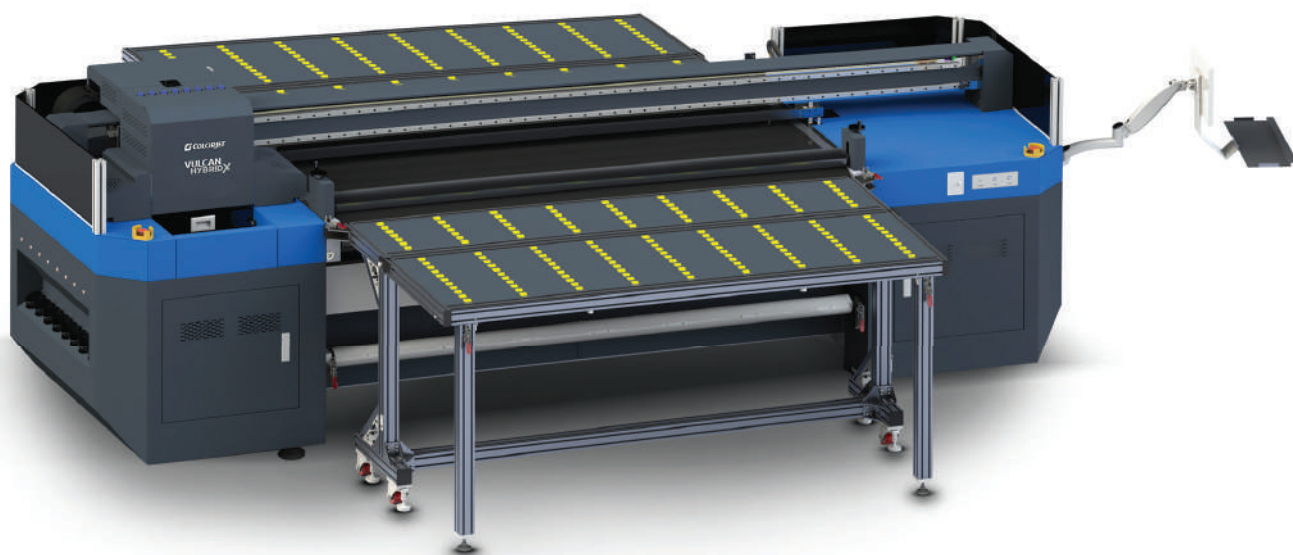
For Vulcan
Scan Here

UV

VULCAN HYBRID X

ONE MACHINE TWO PRINTING FUNCTIONS

2-IN-1 VERSATILE 2 M FLATBED & ROLL-TO-ROLL UV PRINTER, SPEED: 78 SQM/HR



Explicitly designed to satisfy the multipurpose needs of processing enterprises, **Vulcan Hybrid X** is a 2 mtr High-Speed printer that delivers highly precise results in no time. The machine can be used as both flatbed and roll to roll printers and boosts business growth with a higher return on investment (ROI).

Vulcan Hybrid X can work on the substrates like ACP, foam board, flute board, glass, ceramic tiles, wood, and a wide range of vinyl and flexible media.



Linear Motor
Maglev Technology



Auto Media Height
Detection System



4 Zone
Vacuum System



Anti-static
Ioniser



Extension
Table



Anti-crash
System



30 Mm
Media Thickness



Sheet Media
Positioning System



Adjustable Air
Shaft Take Up



FLYERS

CAR WRAPS

KITCHEN TILE

SPECIFICATIONS

VULCAN HYBRID 2001									
Model		V2001Y	V2001R	V2001R6					
Printing Technology		Drop-on-demand, Piezo electric inkjet							
Print Heads		Kyocera, Ricoh G5 & G6							
No. of Print Heads		2 to 6 (3.5 PL)	2 to 9 (7 PL)	2 to 9 (5 PL)					
Media	Thickness	1-30mm							
	Size	2000mm							
	Handling	Conveyor							
Printing size		2000mm							
Curing System		UV LED (water cooling)							
Ink	Types	UV Ink							
	System	Bulk Ink Refillable System							
	Colors	CMYK/LC/LM+Wx	CMYK/LC/LM+W+V	CMYK/LC/LM+W+V					
Distance Accuracy		Error of less than ± 0.3 % of distance travelled, or ± 0.3 mm, whichever is greater							
Connectivity / Interface		USB 2.0							
Power Requirments		AC 220 V, 30A, 50/60 Hz							
Dimensions		4450 x 1400 x 1400 mm							
RIP Software		Onyx (ColorJet Edition)							
Weight		1800 Kg							
Print Head control		Temperature and Voltage control by Waveform Operation							
Environmental		Temperature 20 to 28°C, Humidity 40 to 60%							
Print Speed (In Sq. Meter / Hrs)									
Modes	Print DPI	Passes	Kycoera	Ricoh 5			Ricoh 6		
			1 Row	1 Row	2 Row	3 Row	1 Row	2 Row	3 Row
Mode 1	726 x 1200	4	43	-	-	-	-	-	-
Mode 2	726 x 1800	6	28	-	-	-	-	-	-
Mode 3	726 x 2400	8	21	-	-	-	-	-	-
Mode 1	635 x 600	4	-	-	-	-	29	59	78
Mode 2	635 x 900	6	-	15	27	41	20	40	54
Mode 3	635 x 1200	8	-	12	22	32	15	30	30



For Vulcan Hybrid 3202
Scan Here

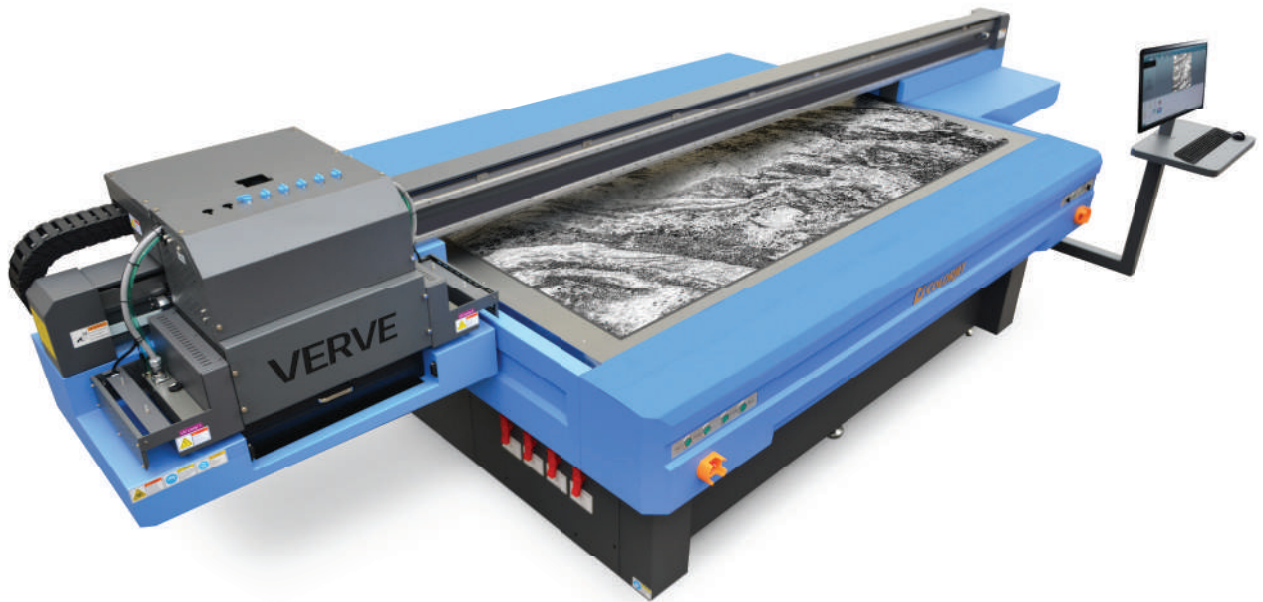
UV

VERVE LED

TRUE FLATBED LED UV PRINTER

VERVE LED (2513/3220HB/3225HB SERIES)

ENHANCED PRINT BUSINESS OPPORTUNITIES



- **UV LED Curing Flatbed** enables high quality direct printing on almost any kind of materials, including wood, glasses, leather, ceramic tiles & much much more.
- High-quality, productive colour scheme with groundbreaking features:



Linear Motor
Maglev Technology



Anti-static
Ioniser



ROHS AND REACH
Compliant Inks



4 Zone
Vacuum System



Anti-crash
System



Dual Media
Height Detection
System



100 Mm
Media Thickness



Dual Negative
Pressure System



White Ink
Circulation
System



CROCKERY



GLASS PANEL



GLASS



FLOOR TILE

SPECIFICATIONS

VERVE LED 2513										
Models			K2513M		K2513R			K2513R6		
Printing Technology			Drop-on-demand, Piezo Electric Inkjet							
Print Heads			Industrial Grade Jetting Assemblies							
No. of Print Heads			4 to 8 (6 PL)		2 to 9 (7 PL)			3 to 9 (5 PL)		
Media		Size	2.56 m x 1.68 m							
		Thickness	Maximum 100 mm							
		Handling	Suction & Blower							
Printing size			2.44 m x 1.22 m							
Curing System			Dual UV LED Lamps							
Ink		Type	UV LED Curable Ink							
		System	Bulk Ink Refillable System							
		Colors	CMYK + W + V							
Printing Resolution (dots per inch)			1200 dpi							
Distance Accuracy			Error of less than ±0.3 % of distance travelled, or ±0.3 mm, whichever is greater							
Connectivity/Interface			USB 2.0							
Power Requirements			AC 220 V, 30 A, 50/60 Hz							
Dimensions (Printer only)			4660 x 2180 x 1480 mm							
Dimensions (With Packing)			4830 x 2280 x 1840 mm							
RIP software			Onyx (ColorJet Edition)							
Weight (Net Weight/Gross Weight) kgs			1450 / 1650							
Environmental		Power ON	Temperature: 18 to 28 °C Humidity: 20 to 60% RH (Non-condensing)							
		Power OFF	Temperature: 5 to 40 °C Humidity: 20 to 80% RH (Non-condensing)							
Print Speed (Sqm/hr)										
			KM 1024 a		Gen 5			Gen 6		
Modes	Print DPI	Passes	4 Heads	8 Heads	2 Heads	4 Heads	6 Heads	2 Heads	4 Heads	6 Heads
			1 Row	2 Rows	1 Rows	2 Rows	3 Row	1 Row	2 Row	3 Row
Mode 1	635 x 900	6	-	-	15	27	41	-	-	-
Mode 2	635 x 1200	8	-	-	12	22	32	-	-	-
Mode 1	635 x 600	4	-	-	-	-	-	32	53	68
Mode 2	635 x 900	6	-	-	-	-	-	22	39	52
Mode 1	540 x 1440	4	34	61	-	-	-	-	-	-
Mode 2	540 x 1080	6	23	41	-	-	-	-	-	-
Mode 3	540 x 1440	8	17	30	-	-	-	-	-	-

*Gradient weak speeds are only for CMYK.



For Verve Led 3220 HB
Scan Here



For Verve Led 3225 HB
Scan Here



UV

VERVEXL³²²⁰

TRUE FLATBED UV PRINTER



MORE SPEED!
MORE OUTPUT!
ENHANCED PROFITABILITY!



Verve XL 3220 is tech-enabled with an independent four-zone vacuum adsorption platform to adjust to soft and rigid media easily. Optimized to print on size 3.2x2 m and an adjustable head height of 200 mm (optional feature). **Verve XL 3220** is an ideal printer for high speed & high-quality printing.

ADDITIONAL FEATURES

- High Precision
- Position Pin and table with the scale rule
- Multiple Color Layout
- High energy LED
- Linear motor drive
- Y axis is dual motor + Ball Screw movement control
- Two vacuum pump
- Horizontal Bed



Automatic Head Height Detection System



Supports heavy substrates upto 100kg



Anti-crash System



White Ink Recirculation system



100mm Media Thickness (extendable upto 200mm)



Japanese Noise Free Guide rail



3 Rows of Gen 5/6 Head plate



1 Row Kyocera Headplate



SPECIFICATIONS

VERVE XL 3220										
Models		KXL 3220 Y			KXL 3220 R			KXL 3220 R6		
Printing Technology		Drop-on-demand, Piezo Electric Inkjet								
No. of Print Heads		2-6 (3.5 PL)			2-9 (7 PL)			2-9 (5PL)		
Head Type		Kyocera, Ricoh G5 & G6								
Ink		VERJET – based on the printheads and support policy								
Media	Thickness	1-100mm								
	Handling	Suction & Blower								
Printing size		3200x2000mm								
Curing System		UV LED (water cooling)								
Ink	Type	UV Ink								
	System	Bulk Ink Refillable System								
	Colors	CMYK/LC/LM+Wx			CMYK/LC/LM+W+V			CMYK/LC/LM+W+V		
Distance Accuracy		Error of less than ± 0.3 % of distance travelled, or ± 0.3 mm, whichever is greater								
Connectivity/Interface		USB 2.0								
Power Requirements		AC 220 V, 30A, 50/60 Hz								
Dimensions		5060x2780x1350mm								
RIP software		ONYX(ColorJet Edition)								
Weight		2350Kg								
Print Head control		Temperature and Voltage control by Waveform Operation								
Environmental		Temp. 20°C-28°C; Humidity 40%-60%								
Print Speed (Sq. Meter/Hrs)										
Modes	Print DPI	Passes	K3220Y (KYOCERA)			K3220R5 (RICOH 5)			K3220R6 (RICOH 6)	
			1 ROW	1 ROW	2 ROW	3 ROW	1 ROW	2 ROW	3 ROW	
Mode 1	726x1200	4	39	-	-	-	-	-	-	
Mode 2	726x1800	6	27	-	-	-	-	-	-	
Mode 3	726x2400	8	19	-	-	-	-	-	-	
Mode 1	635x600	4	-	-	-	-	32	53	73	
Mode 2	635x900	6	-	17	31	43	21	39	51	
Mode 3	635x1200	8	-	13	22	30	16	29	38	

* All speeds mentioned are for CMYK



UV

VERVE HYBRID

UV FLATBED/ROLL-TO-ROLL PRINTER

VERVE HYBRID (3220/3225 SERIES)

DELIVERS SUPER SPEED VERSATILE UV PERFORMANCE



VERVE HYBRID is a 3.2 M UV Flatbed Roll to Roll Hybrid printer that delivers fast and versatile UV performance. This UV printer enables super speed production and is engineered for high-endurance work and low running costs to deliver high-quality print for a long time.

FEATURES FOR HIGHER PRODUCTIVITY

- > Extra wide print width - 3.2m
- > Proprietary AIVC jetting technology
- > Variable drop technology
- > Accurate and reliable high speed printing
- > Large range of printable media
- > Solid build quality, low maintenance

ADDITIONAL FEATURES

- > Precisely engineered using 3D CNC Machinery
- > Intelligent Media Thickness System
- > Anti-Crash Sensor
- > Advanced RIP for faster processing & better colour management
- > Fully customised printer settings for enhanced print results
- > Industrial grade jetting assembly
- > Consistent print quality through the life of printhead
- > System designed to use white ink as additional color
- > Adjustable UV lamp power enables better drying control
- > Vacuum system can be adjusted in four zones
- > Specially formulated inks with wider color gamut & higher density.



SPECIFICATIONS

VERVE HYBRID 3220													
Models			Y3220Y		Y3220R				Y3220R6				
Printing Technology			Drop-on-demand, Piezo Electric Inkjet										
Print Head Type			Industrial Grade Jetting Assemblies										
No. of Print Heads			2 to 8 (3.5 PL)		2 to 12 (7 PL)				2 to 12 (5PL)				
Media	Size		3.2m x 2.0m Bed / 3.2m x Unlimited Roll										
	Thickness		Maximum 100 mm										
	Handling		Suction & Blower										
Printing Size			3.2m x 2.0m / 3.2m x Unlimited Roll										
Curing System			Dual UV LED Lamps										
Ink	Type		UV LED Curable Ink										
	System		Bulk Ink Refillable System										
	Colors		CMYK + W (Lc Lm)		CMYK + W + V (Lc Lm Optional)								
Printing Resolution (dots per inch)			2400 dpi										
Distance Accuracy			Error of less than ±0.3 % of distance travelled, or ±0.3 mm, whichever is greater										
Connectivity/Interface			USB 3.1										
Power Requirements			AC 220 V, 30 A, 50/60 Hz										
Dimensions (Printer Only)(LxWxH)			5600mm x 3350mm x 1550mm										
Dimensions (With Packing)(LxWxH)			5780mm x 2280mm x 1940mm, 4180mm x 880mm x 1340mm										
RIP Software			Onyx (ColorJet Edition)										
Weight			N.W. 3360 Kg, G.W. 3900 Kg										
Environmental	Power ON		Temperature:18 to 28 °C Humidity: 20 to 60%RH (Non-condensing)										
	Power OFF		Temperature: 5 to 40 °C Humidity: 20 to 80%RH (Non-condensing)										
Flatbed / Roll-to-Roll Print Speed (Sqm/hr)													
3220 Hybrid			Kyocera		Ricoh 5				Ricoh 6				
Modes	Print DPI	Passes	2 Heads	4 Heads	2 Heads	4 Heads	6 Heads	8 Heads	2 Heads	4 Heads	6 Heads	8 Heads	
			1 row	2 row	1 row	2 row	3 row	4 row	1 row	2 row	3 row	4 row	
Mode 1	604 x 600	4	48	75	-	-	-	-	-	-	-	-	
Mode 2	604 x 900	6	33	54	-	-	-	-	-	-	-	-	
Mode 3	604 x 1200	8	25	43	-	-	-	-	-	-	-	-	
Mode 1	635 x 600	4	-	-	25	48	-	-	34	55	71	91	
Mode 2	635 x 900	6	-	-	17	33	51	68	24	41	54	76	
Mode 3	635 x 1200	8	-	-	13	25	43	58	18	33	43	61	

*Also available in 3225 bed size, Please refer to website



For Verve Hybrid 3225
Scan Here

UV

VERVE mini

COMPACT FLATBED LED UV PRINTER

ONE PRINTER MULTIPLE APPLICATIONS



The new Verve Mini is a True Flatbed UV Printer to redefine printing experience faster and more exhilarating with less investment and offers big opportunities. Verve Mini is UV flatbed printer, now with an automatic head adjuster up to 100 mm. Equipped with 1000 x 1600 mm print size, adopting new 4 to 7 Pcs Ricoh Print Head with Print Speed of 60 sqft/h.



COASTERS

MOUSE PAD

MOBILE COVERS

SPECIFICATIONS

			VERVE MINI	
Model			KB6622	KB7622
Printing Technology			Drop-on-demand, Piezo Electric Inkjet	
Print Heads			Ricoh GH2220	
No. of Print Heads			6 heads	7 heads
No. of Rows			2 rows	3 rows
Media	Size		1050 x 1650 mm	
	Thickness		Maximum 65 mm / 100 mm	
	Handling		Suction & Blower	
Printing Size			1000 x 1600 mm	
Ink	Inks		UV LED Curable Ink	
	Types		Rigid/Universal/Flexible	
	Colors		CMYK W V	
Curing System			Dual UV LED Lamps	
Printing Resolution (dots per inch)			1800 dpi	
Distance Accuracy			Error of less than $\pm 0.3\%$ of distance travelled, or ± 0.3 mm, whichever is greater	
Connectivity / Interface			High Speed USB	
Power Requirements			AC 230V, 20A, 50/60 Hz	
Dimensions (Printer Only) (LxWxH)			2250 x 2200 x 1200 mm	
Dimensions (With Packing) (LxWxH)			2700 x 1400 x 1700 mm	
RIP Software			Flex	
Weight			Net Weight. 375 kg, Gross Weight. 635 kg	
Environmental	Power On		Temperature 20 to 28 C, Humidity 40 to 60 % RH (Non-Condensing)	
	Power Off		Temperature 20 to 28 C, Humidity 40 to 60 % RH (Non-Condensing)	
Modes	Print DPI	Passes	Print Speed Sqft/hr (only CMYK+W)	Print Speed Sqft/hr (only CMYK+W+V)
Mode 1	720 x 900	6	60	60
Mode 2	720 x 1200	8	48	48

Available in 6 and 7 head configurations, with separate placement for white and varnish in the 7 head model



For Verve mini
Scan Here

SOFT SIGNAGE

SOFTJET GRAND[®] 8 COLOR
OPTION AVAILABLE

GRAND FORMAT 3.2 MTR. SOFT SIGNAGE PRINTER

FOR REDUCED ENVIRONMENTAL IMPACT & GREATER PROFITABILITY



SOFTJET GRAND, the 3.2 mtr wide printer is the perfect solution, completely in-sync with the diverse requirements of today's well-developed market. An industrial soft signage printer that combines digital advantages, efficiently optimised to replace PVC-based media completely. It easily prints on polyester-based fabrics which can be recycled and uses environment-friendly aqueous based inks. **Softjet Grand** is most suitable for a large range of soft signage applications, such as banners, displays, wall decorations, signage, parasols, flags, backdrops and outdoor advertisements.

- Ultra High Productivity
- Reduced Environmental Impact
- Vibrant Colors & Reproduction
- Maximum Applications & Profitability





FLAGS



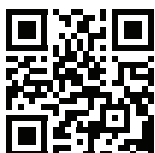
CANOPY



DROP DOWN BANNERS

SPECIFICATIONS

			SOFTJET GRAND	
Models			L8424	L8824
Printing Technology			Drop on demand, Piezo electric inkjet	
Print Heads			Industrial Grade Jetting Assemblies	
No. of Print Heads			8	8
Fabric	Width	3300 mm		
	Thickness	Maximum 10mm with Liner		
	Roll Outer Diameter	Maximum 300mm		
	Roll Weight	Maximum 90kg		
	Core Diameter	76.2mm		
	Types	Polyester, Satin, Canvas & Blends		
Printing Width			Maximum 3200mm	
Inks	Types	Direct disperse inks		
	Colors	4	8	
Printing Resolution (dots per inch)			Maximum Up to 1440 dpi	
Distance Accuracy			Error of less than ±0.3 % of distance travelled, or ±0.3 mm, whichever is greater	
Media Heating System			Pre-heater and post-heater, setting range for the preset temperature: 30°C to 60°C Dryer setting range for the preset temperature: 30°C to 60°C	
Connectivity			High Speed USB	
Power Requirements			AC 220 V, 40A(± 10%), 50Hz	
Dimensions (Printer only) (LxWxH)			5300 x 1450 x 1650mm	
RIP Software			PhotoPrint (ColorJet Edition)	
Weight (approx. with stand)			2000 Kgs	
Environmental	Power ON	Temperature: 18°C to 28°C. Humidity: 35% to 80%RH (non-condensing)		
	Power OFF	Temperature: 5°C to 40°C. Humidity: 20% to 80%RH (non-condensing)		
			Print Speed (Sqm/hr)	
Modes	Print DPI	Passes	L8424	L8824
Mode 1	540 x 720	2	167	98
Mode 2	540 x 1080	3	116	68
Mode 3	540 x 1440	4	87	51
Mode 4	720 x 1080	6	46	26
Mode 5	720 x 1440	8	42	24
Fusing Unit Specification	Power Requirement	Voltage AC 380 V ± 10%, 50-60 Hz, 21A,		
	Heating Range	160°C- 240°C Heat Energy		
	Dimensions	5180mm x 900mm x 1540mm (LxWxH)		
	Max Fabric Width	3300 mm		



For Softjet Grand
Scan Here

SOLVENT

POLO_{XL}

3.2 MTR ROLL-TO-ROLL
SOLVENT PRINTER

HIGH-QUALITY, MAX PROFITABILITY, HIGH-SPEED SOLVENT PRINTER



Polo XL, 3.2 meter industrial- grade solvent printer is a combination of high speed and high-quality printing. Designed to provide an unprecedented solution for indoor and outdoor printing needs with production capacity up to 4700 sqft/hr. Its independent drive technology renowned for high speed, high-quality output, reliability, and low running costs

SPECIFICATION:

- Optimized weight distribution, enabling perfect CG
- 3 meter wide Take-up system
- Enhanced printing dryer
- Enhanced Aerodynamic Carriage
- Transport and Relocation Friendly





WINDOW FILM



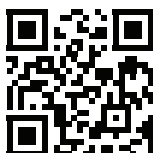
OUTDOOR HOARDING



FLAGS

SPECIFICATIONS

POLO XL						
Models			GB4424	GB8424	GB4412	GB8412
Printing Technology			Drop-on-demand, Piezo electric inkjet			
No. of Print Heads			4 Head	8 Head	4 Head	8 Head
Print Heads			Grayscale Industrial Grade Jetting assemblies			
Media	Width		3300 mm			
	Thickness		Maximum 3.0 mm with Liner			
	Roll Outer Diameter		Maximum 352 mm			
	Roll Weight		Maximum 150 Kg			
	Core Diameter		76.2 mm, 50.8 mm			
	Types		SAV, PAV Banner, Backlit Film, Window Film, Fabric (Solvent Base)			
Printing Width			Maximum 3200 mm			
Ink	Types		Solvent based pigment inks			
	Color		4 colors			
Printing Resolution (dots per inch)			Maximum up to 1440 dpi			
Distance Accuracy			Error of less than ±0.3% of distance travelled, or ±0.3 mm whichever is greater			
Media Heating System			Pre-heater and post-heater, setting range for the preset temperature: 30°C to 60°C. Dryer Setting range for the preset temperature: 30°C to 60°C			
Connectivity			High Speed USB			
Power Requirements			AC 220V , 40A (±10%), 50Hz			
Dimensions (Printer only)			4960 mm x 950 mm x 1580 mm (LxWxH)			
RIP software			Onyx (ColorJet Edition)			
Weight (approx. with stand)			1500 kgs			
Environmental	Power ON		Temperature: 18°C to 28°C, Humidity: 35 to 80%RH (Non-condensing)			
	Power OFF		Temperature: 5°C to 40°C, Humidity: 20 to 80%RH (Non-condensing)			
Print Speed						
			KM 1024 i		KM 512 i	
			GB4424	GB8424	GB4412	GB8412
Modes	Print DPI	Passes	Speed (In Sqft/hr)	Speed (In Sqft/hr)	Speed (In Sqm/hr)	Speed (In Sqft/hr)
Mode 1	360 x 360	1	2830	4715	-	-
Mode 2	360 x 720	2	1636	2744	-	-
Mode 3	360 x 1080	3	1162	1937	-	-
Mode 4	360 x 1440	4	904	1506	-	-
Mode 5	360 x 1080	6	645	1076	-	-
Mode 6	360 x 1440	8	516	861	-	-
Mode 1	360 x 360	2	-	-	1614	2818
Mode 2	360 x 540	3	-	-	1093	2000
Mode 3	360 x 720	4	-	-	806	1476
Mode 4	720 x 720	4	-	-	521	930
Mode 5	720 x 1080	6	-	-	327	640
Mode 6	720 x 1440	8	-	-	249	490



For Polo XL
Scan Here

SOLVENT

SONIQ DUO
SOLVENT PRINTER



ADVANCED ENGINEERING FOR ULTIMATE PRINTING EXCELLENCE



Introducing the SoniQ Duo, a groundbreaking 3.2-meter Solvent Printer designed to revolutionize indoor and outdoor signage production. Equipped with 8 high-speed KM heads, it sets a new benchmark for upgradability, guaranteeing peak performance well into the future. Delivering breathtaking quality at an impressive speed of 2217 sqft/hr, it caters perfectly to both indoor and outdoor requirements.

SONIQ DUO PIONEERING DEVELOPMENTS:



Efficient IR Drying System



Head Upgradability With 8 Heads



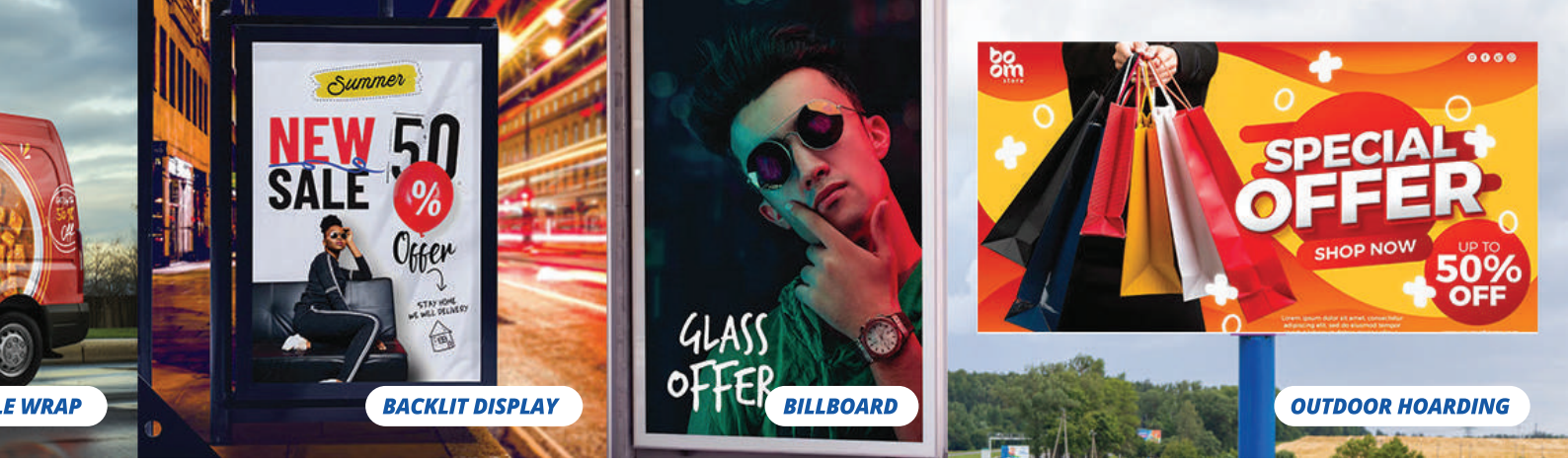
Advanced Capping Station



3-way Heating Mechanism



Suction-Boost Technology



SPECIFICATIONS

SONIQ DUO				
Model		SB4412		SB8412
Printing Technology		Drop-on-demand, Piezo electric inkjet		
Print Heads		Industrial Grade Jetting Assemblies		
No. of Heads		4		8
Media	Width	3300 mm (129 in.)		
	Thickness	Maximum 3.0 mm (120 mil) with liner (flexible)		
	Roll Outer Diameter	Maximum 300mm (12inch), 50.8 (2 in)		
	Roll Weight	Maximum 90 kgs		
	Core Diameter	76.2mm (3 inch)		
	Types	SAV, PAV Banner, Backlite Film, Window Film, Fabric (Solvent Base)		
Printing Width		Maximum 3200mm (126 inch.)		
Inks	Types	Solvent/Mild Solvent inks		
	Colors	4 Colors (CMYK)		
Printing Resolution (Dots Per Inch)		Maximum up to 1440 dpi		
Distance Accuracy		Error of less than ±0.3 % of distance travelled, or ±0.3 mm, whichever is greater		
Media Heating System		Pre Heater and Post Heater, setting range for the preset temperature: 30 to 60°C. Dryer setting range for the preset temperature : 30 to 60°C		
Connectivity		High speed USB		
Power Requirements		AC 220 V ±10%, 40 A, 50/60 Hz		
Dimensions		4700mm X 1000mm X 1450mm(WxDxH)		
RIP Software		FlexiPrint		
Weight (approx. with stand)		Net Weight : 550 KG, Gross Weight : 742 KG		
Environmental	Power ON	Temperature: 18 to 28°C Humidity: 35 to 80%RH (non-condensing)		
	Power OFF	Temperature: 5 to 40°C Humidity: 20 to 80%RH (non-condensing)		
Modes	Print DPI	Passes	Sqft/Hr (4 Heads)	Sqft/Hr (8 Heads)
Mode 1	360x360	2	1232	2217
Mode 2	360x540	3	830	1496
Mode 3	360x720	4	664	1205
Mode 4	720x720	4	348	635
Mode 5	720x1080	6	232	420
Mode 6	720x1440	8	177	322



For Soniq DUO
Scan Here

SOLVENT

SONIQ i

3.2 MTR ROLL-TO-ROLL PRINTER

SLEEK, COMPACT & FUTURISTIC PRINTER



SoniQ i delivers excellent print quality at an ultra-fast speed of 1232 sqft/hr and offers maximum performance at a minimum investment.

The heavy-duty forefront industrial print heads of the machine are engineered for lasting performance. With 3.2 mtr roll capability to accommodate every media size, it is also an excellent alternative for huge savings on inks & time with pressure purge for individual colors.

PREMIUM FEATURES:



FGP (FOREFRONT GANTRY PRECISION) TECHNOLOGY

SoniQi comes with unmatched FGP technology, which ensures extremely less deviation between jet to bed distance (<0.1mm) over the entire printing span and maintains consistent print quality.



EDGE EXCELLENCE TECHNOLOGY

Enhance Printing Precision on the Border of the Media and helps in the smooth change over of carriage direction, leading to less jerk and lesser wear and tear.



DIGITAL VISCOSITY OPTIMIZATION

Optimized with digital observation of Ink viscosity curve, which helps in maintaining a stable waveform of jetting and ensures constant print quality.

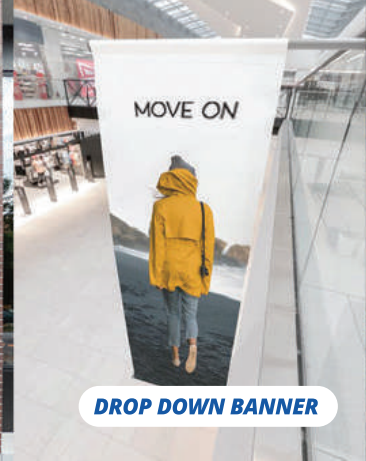


PRESSURE DECLOGGER

SoniQ i offers a fifth button for **declogging**, which helps in maintaining pressure for efficient cleaning and reducing ink wastage.



BILLBOARD



DROP DOWN BANNER



BACKLIT DISPLAY



OUTDOOR HOARDING



SPECIFICATIONS

			SoniQ i	
Model			S4412	
Printing Technology			Drop-on-demand, Piezo electric inkjet	
Print Heads			Industrial Grade Jetting Assemblies	
Media	Width	3300 mm (129 in)		
	Thickness	Maximum 3.0 mm (120 mil) with Liner (flexible)		
	Roll Outer Diameter	Maximum 300 mm (12 in), 50.8 (2 in)		
	Roll Weight	Maximum 90 kg		
	Core Diameter	76.2 mm (3 in)		
Types			SAV, PAV Banner, Backlit Film, Window Film, Fabric (For Solvent Printing)	
Printing Width			Maximum 3200 mm (126 in)	
Ink	Type	Solvent / Mid Solvent Inks		
	No. of Colors	4 Colors (CMYK)		
Printing Resolution (dots per inch)			Maximum up to 1440 dpi	
Distance Accuracy			Error of less than ± 0.3% of distance travelled, or ± 0.3 mm whichever is great	
Media Heating System			Pre-heater and post-heater , setting range for the pre-set temperature: 30°C to 60°C Dryer setting range for the pre-set temperature: 30°C to 60°C	
Connectivity			High Speed USB	
Power Requirements (Peak)			AC 220 v ±10%, 20 Amps, 50/60 Hz	
Printer Dimensions			4525mm x 885mm x 1500mm (LxWxH)	
RIP Software			FlexiPrint	
Weight (approx. with stand)			642 Kgs	
Environmental	Power ON	Temperature: 18°C to 28°C Humidity: 20 to 40% RH (non-condensing)		
	Power OFF	Temperature: 5 to 40°C Humidity: 20 to 80%RH (non-condensing)		
Modes	Print DPI	Passes	Sqm/hr	Sqft/hr
Mode 1	360 x 360	2	114	1232
Mode 2	360 x 540	3	77	830
Mode 3	360 x 720	4	62	664
Mode 4	720 x 720	4	33	348
Mode 5	720 x 1080	6	22	232
Mode 6	720 x 1440	8	17	177



For Soniq i
Scan Here

SOLVENT

NEPTUNE PLUS

3.2 METRE ROLL-TO-ROLL SOLVENT PRINTER

TECHNOLOGICALLY ADVANCED AND INNOVATIVE SIGNAGE PRINTER



NEPTUNE PLUS is a 3.2 Metre roll-to-roll solvent printer that combines high quality and high production speed. This newly launched NEPTUNE PLUS is ColorJet's signature flagship product. With its well-renowned robust body combined with improvised & advanced features, it offers very high value for money in its class and will be an unending success story for all its users. It is based on industrial Drop-on-Demand Japanese print head technology.

NEPTUNE PLUS is the finest solution for outdoor advertising applications customers, who need the quality prints at a very high speed. It is ideal for sign shops and commercial printers seeking to upgrade the quality and offer greater versatility and speed at an optimally cost-effective price. It is also an excellent solution for corporate in-house production of exhibition graphics, posters, signage, billboards, etc.

OPTIVALUE™
BUILD

xactcolor™

CIPO™



SPECIFICATIONS

			Neptune Plus	
Model			I4442	I8442
Printing Technology			Drop-on-demand, Piezo electric inkjet	
Print Heads			Industrial Grade Jetting Assemblies	
Number of heads			4	8
Media	Width		3300 mm (129 in)	
	Thickness		Maximum 3.0 mm (120 mil) with Liner (flexible)	
	Roll Outer Diameter		Maximum 300 mm (12 in), 50.8 (2 in)	
	Roll Weight		Maximum 90 kg	
	Core Diameter		76.2 mm (3 in)	
Types			SAV , PVC Banner , Backlit Film , Window Film , Fabric (Solvent Base)	
Printing Width			Maximum 3200 mm (126 in)	
Ink	Type		Solvent/Mild Solvent inks	
	No. of Colors		4 Colors (CMYK)	
Printing Resolution (dots per inch)			Maximum 1440 dpi	
Distance Accuracy			Error of less than $\pm 0.3\%$ of distance travelled, or ± 0.3 mm whichever is great	
Media Heating System			Pre-heater and post-heater , setting range for the pre-set temperature: 30°C to 60°C Dryer setting range for the pre-set temperature: 30°C to 60°C	
Connectivity			High Speed USB	
Power Requirements			AC 220 v $\pm 10\%$, 20 Amps, 50/60 Hz	
Printer Dimensions			4510mm x 1022mm x 1355mm (L x W x H)	
Ink Compatibility			Solvent Inks	
Weight (Gross)			470 Kgs	
Environmental	Power ON		Temperature: 18°C to 28°C Humidity: 35 to 80% RH (non-condensing)	
	Power OFF		Temperature: 5°C to 40°C Humidity: 20 to 80% RH (non-condensing)	
Modes	Print DPI	Passes	I4442	I8442
Mode 1	180 x 360	2	42 sqm/hr (452 sqft/hr)	70 sqm/hr (753 sqft/hr)
Mode 2	180 x 540	3	28 sqm/hr (300 sqft/hr)	55 sqm/hr (592 sqft/hr)
Mode 3	180 x 720	4	24 sqm/hr (259 sqft/hr)	40 sqm/hr (430 sqft/hr)



For Neptune Plus
Scan Here

ECO SOLVENT

POLO HQ™

6 COLOR
OPTION AVAILABLE

HIGH SPEED ECO-SOLVENT INDUSTRIAL PRINTER

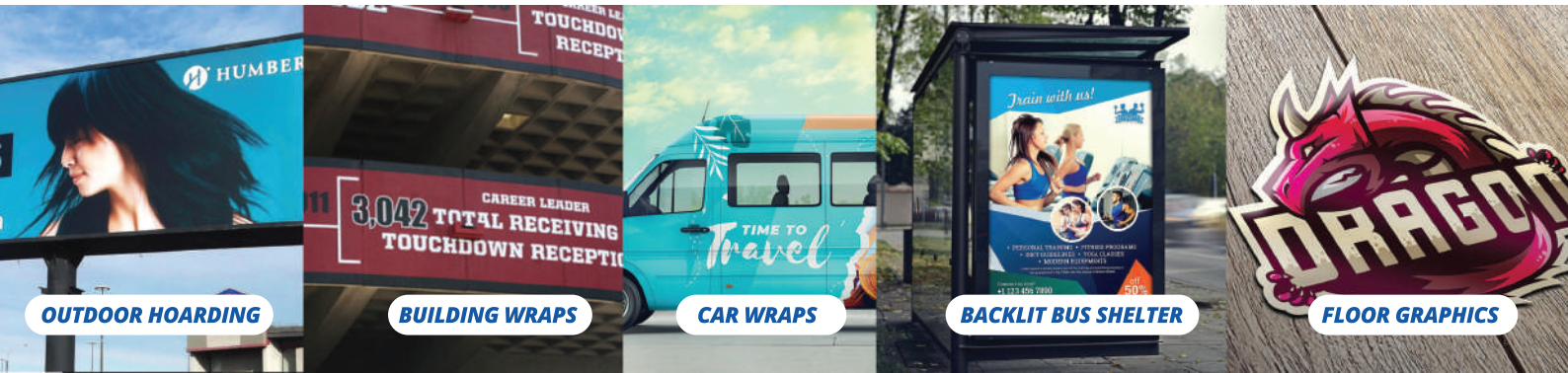
BUILT TO DELIVER GREAT QUALITY PRINTS QUICKLY



POLO HQ, the high-speed Industrial grade eco-solvent printer is built for speed & quality. At a speed of 1175 sqft/hr, **POLO HQ** displays quality print for mass production supported by IR based effective evaporative drying system to meet the high volume requirement. The 3.2 mtr roll-to-roll eco-solvent printer based on industrial grade jetting assembly ensures accuracy at high speed. The environment-friendly **POLO HQ** is built on heavy duty structure made with high mechanical precision standard to meet the growing requirement of those who want speed with quality.

GREEN TECH INK MECHANISM GREENTECH™

Polo HQ is highly eco-friendly and is based on ColorJet's **Greentech** Mechanism, which adheres to international print standards and environmental norms. Born from ColorJet's commitment to green printing, Greentech leverages advanced technology to use eco-solvent inks, ensuring low chemical emissions and reduced environmental and health risks. This approach guarantees optimal print solutions that meet both industry and eco-friendly requirements.



OUTDOOR HOARDING

BUILDING WRAPS

CAR WRAPS

BACKLIT BUS SHELTER

FLOOR GRAPHICS

SPECIFICATIONS

			POLO HQ	
Models			G4425	G6625
Printing Technology			Drop-on-demand, Piezo Electric inkjet	
Print Head			Grayscale Industrial Grade Jetting Assemblies	
No. of Print Heads			4	6
Media	Width	3300mm		
	Thickness	Maximum 3.00 mm with liner		
	Roll Outer Diameter	Maximum 3.52 m		
	Roll Weight	Maximum 150 Kg		
	Core Diameter	76.2mm , 50.8mm		
Types			Fabric (Ecosolvent based), SAV, PVC Banner, Backlit Film, Window Film	
Printing Width			Maximum 3200mm	
Inks	Types	Eco Solvent Ink		
	Color	4 Colors	6 Colors	
Printing Resolution (dots per inch)			Maximum Up to 1440 dpi	
Distance Accuracy			Error of less than ±0.3% of distance traveled, or ±0.3 mm whichever is greater	
Media Heating System			Pre heater and Post-heater, setting range for the preset temperature: 30 to 60°C Dryer Setting range for the preset temperature: 30 to 60°C	
Connectivity			High Speed USB	
Power Requirements			AC 220 V+ _10%, 20 A, 50/60 Hz	
Dimensions			4960mm x 950mm x 1580 mm (LxWxH)	
RIP software			Onyx Gamaprint Rip (ColorJet Edition)	
Weight (approx. with stand)			1500 Kgs N.W., 1650 Kgs G.W	
Environmental	Power ON	Temperature: 18°C to 28°C, Humidity: 35 to 80%RH (Non-condensing)		
	Power OFF	Temperature: 5°C to 40°C, Humidity: 20 to 80%RH (Non-condensing)		
Modes	DPI	Passes	Sqm/hr	Sqft/hr
Mode 1	540 x 720	2	109	1175
Mode 2	540 x 1080	3	73	785
Mode 3	540 x 1440	4	46	495
Mode 4	540 x 1080	6	38	410
Mode 5	540 x 1440	8	26	280



For Polo HQ
Scan Here

ECO SOLVENT

SONIQ HQ PLUS

TRUE 3.2 MTR ECO SOLVENT PRINTING MACHINE

PROFESSIONAL QUALITY BEYOND COMPARE



Super-fast speed and vibrant prints of **SONIQ HQ PLUS** make it the go-to solution for indoor & outdoor printing needs. The configuration supports CMYK options with speeds achieving upto 915 Sqft/hr.

SONIQ HQ PLUS is the most suitable choice for a large array of ECO-solvent applications like Fabric, Canvas, SAV, PAV Banner, Window Film, Backlit both Eco-Solvent & Solvent Base.

PREMIUM FEATURES:



6 PL RAZOR-SHARP PRINT

Capable of **6 picoliter droplets** that produce higher-resolution prints. The smallest picoliter is able to express clear thin lines, remarkable details, and needle-sharp text.



BioPrint™ Technology is specially created for prints on **Bio-Degradable and 100% Recyclable** Fabric media offers future-proof sustainable solutions to all the print business problems.

42 PL

**B
E C
O M E
S O M E
T H I N G
E X T R A O
R D I N A R Y**

6 PL

**B
E C
O M E
S O M E
T H I N G
E X T R A O
R D I N A R Y**

30 PL

**B
E C
O M E
S O M E
T H I N G
E X T R A O
R D I N A R Y**



SONIQ HQ PLUS which is equipped with **GreenTech™** is compliant with all International Print Standards for providing perfect print solutions to the customers as per the industry and environmental norms.



BILLBOARD

VEHICLE WRAPS

BANNER

WALLPAPER

SPECIFICATIONS

SoniQ HQ Plus				
Model			S4427	
Printing Technology			Drop-on-demand, Piezo electric inkjet	
Print Heads			Industrial Grade Jetting Assemblies	
Fabric	Width		3300 mm (129 in)	
	Thickness		Maximum 3.00 mm with Liner (Flexible)	
	Roll Outer Diameter		Maximum 300 mm (12 in), 50.8 (2 in)	
	Roll Weight		Maximum 90 kg	
	Core Diameter		76.2 mm (3 in)	
	Types		Fabric, SAV, Canvas, PVC Banner, Window Film	
Printing Width			Maximum 3200 mm (126 in)	
Inks	Type		Eco Solvent	
	No. of Colors		4 Colors (CMYK)	
Printing Resolution (dots per inch)			Maximum 1440 dpi	
Distance Accuracy			Error of less than $\pm 0.3\%$ of distance travelled, or ± 0.3 mm whichever is great	
Media Heating System			Pre-Heater and Post-Heater, setting range for the pre-set temperature: 30°C to 60°C Dryer setting range for the pre-set temperature: 30°C to 60°C	
Connectivity			High Speed USB	
Power Requirements			AC 220 v $\pm 10\%$, 20 A, 50/60 Hz	
Printer Dimensions			4525 mm x 885 mm x 1500 mm (L x W x H)	
RIP Software			ONYX	
Weight (Gross)			642 Kgs	
Environmental	Power ON		Temperature: 18°C to 28°C Humidity: 20 to 80% RH (non-condensing)	
	Power OFF		Temperature: 5°C to 40°C Humidity: 20 to 80% RH (non-condensing)	
Modes	DPI	Passes	Sqm/hr	Sqft/hr
Mode 1	720 x 720	2	85	915
Mode 2	720 x 1080	3	55	592
Mode 3	720 x 1440	4	45	485
Mode 4	720 x 1080	6	28	300
Mode 5	720 x 1440	8	23	248



For SoniqHQ Plus
Scan Here

COLORJET inks

More print per drop

WHY COLORJET INKS INCREASE YOUR PRINT BUSINESS PROFITABILITY

Engineered to maximise print quality

Engineered to maximise print speed and job turn around

Engineered to maximise print-head life and machine maintenance

Engineered to maximise your business

Engineered to maximise your printer's productivity

12 SOLID TECH REASONS



1. HIGHEST COVERAGE PER DROP FOR BEST PROFITABILITY



2. ENGINEERED TO WORK OPTIMALLY WITH PRINT-HEAD WITH MINIMUM DOWNTIME



3. HIGHEST PIGMENT CONTENT FOR MAX OUTDOOR LIFE



4. QUICKEST-DRYING FOR FASTEST JOB COMPLETION



5. OPTIMAL INK PERFORMANCE EVEN UNDER VARYING TEMPERATURE & HUMIDITY



6. ENGINEERED FOR MAX SCRATCH-RESISTANCE & BEST LONG TERM PRINT FINISH



7. COLOR DENSITY & COLOR GAMUT FOR MAX APPLICATIONS



8. MAX SHELF LIFE



9. CHEMICALLY ENGINEERED FOR OPTIMISED PRINT SYSTEM & MAX ECO FRIENDLINESS



10. HIGH SPEED PRODUCTION



11. WIDE-RANGE OF INKS FOR WIDEST RANGE OF MEDIA



12. ENGINEERED FOR LOWEST PRINTER MAINTENANCE



END-TO-END INK RANGE

Solvent | Eco-Solvent | Dye-Sublimation
UV Curable | Textile

Disclaimer: The speed and output of all machines have been tested with the usage of ColorJet inks. The organization recommends ColorJet inks to be used on ColorJet machines for optimum productivity and maximum profits. The availability of inks are country specific.

HIGH QUALITY, COLOR CONSISTENT DIGITAL PRINTING WITH COLORJET PROPRIETARY TECHNOLOGIES

OPTI**VALUE** BUILD

Digital printers are the business lifeline of print solution providers. This makes the optimal life of the machine's entry and exit across a heavy utilisation and new technology development time-cycle critical.

All Colorjet digital printers are designed & engineered through 3D simulation processes at Colorjet's Innovation Laboratories and built optimally, to deliver phenomenal business value, income and an optimal exit point to customers.



Built from 100% galvanized steel



Built to ensure accuracy of every micron



Have functional structures designed & manufactured from aeronautical - grade hard-anodized aluminium



Optimal performance from concept to design to prototype to production stages



8 stage preparation process of design, chemical treatment, powder coating and paint



QA processes to ensure error-free performance



Highest standard of aluminium and CNC

xactcolor

In XACTCOLOR section replace first sentence with "Xactcolor™ was born after extensive research as a response to a problem that emerged from the market and keep updated in pushing the limits. Climate and weather condition-wise, India is a very diverse country. Temperatures from subzero to 50 degrees celsius and humidity from high dew point to absolutely arid. These diverse climatic conditions influence ink and media to behave differently across different temperature and humidity zones.



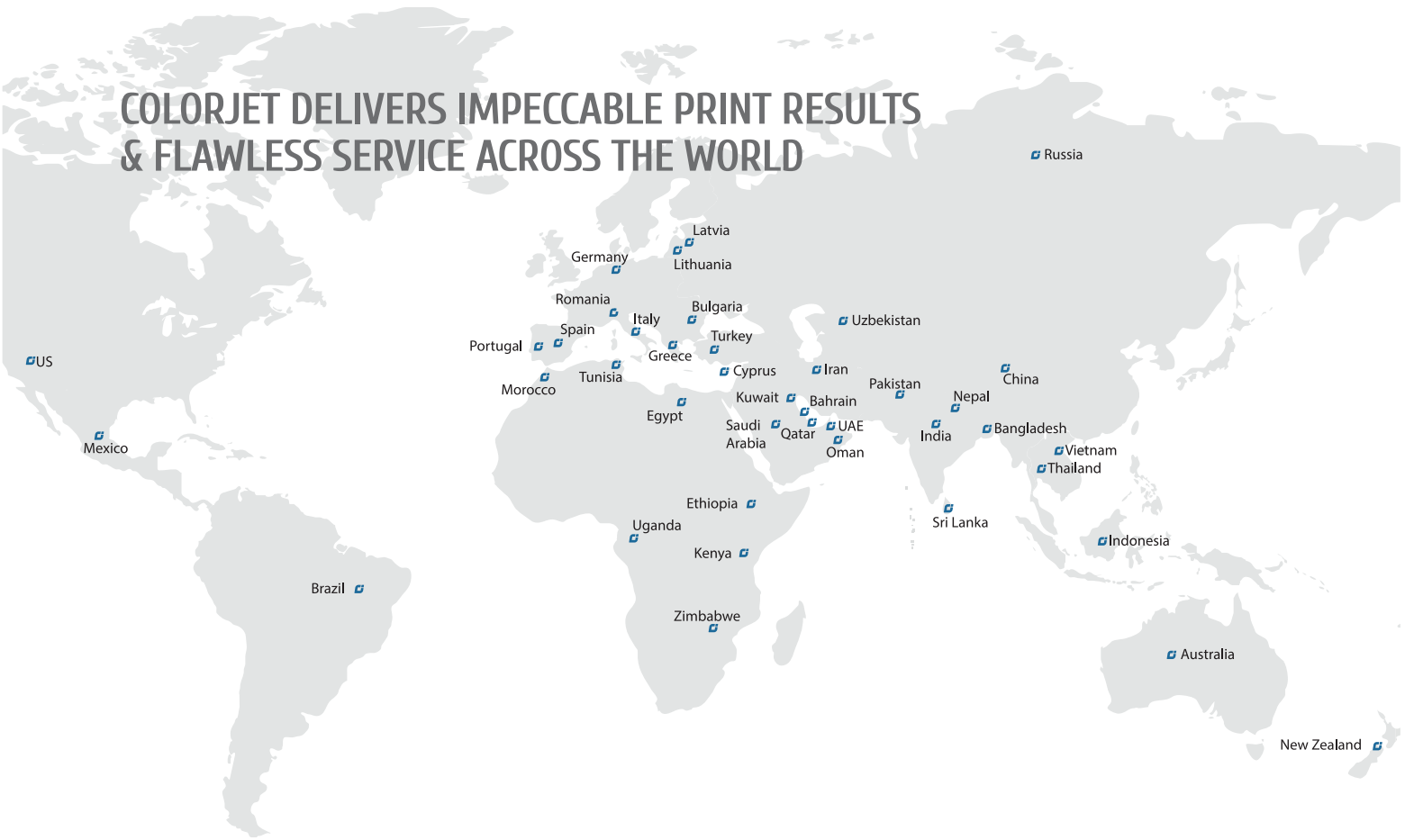
Synchronised print-head and software solution



Variable drop technology

The Colorjet R&D team created XACTCOLOR to reconcile all usage conditions through printhead, mechanical capability and software technologies to deliver consistent colour reproduction and detail under all applications and geographies.

COLORJET DELIVERS IMPECCABLE PRINT RESULTS & FLAWLESS SERVICE ACROSS THE WORLD



COLORJET GROUP

INDIA : A-6&7, In Front Of Samsung Display Unit, Sector-81, Noida-201305 (U.P.), INDIA. T +91 81783 43337

DUBAI : Block-A, Office No: 115, Hamsah Building, Karama, P.O. Box: 123360, Dubai-UAE. T 00971 43961744

info@colorjetgroup.com | www.colorjetgroup.com

Accessories shown in this brochure are not included with the standard equipment. ColorJet's results are indicative only and may vary. Specifications, materials, and accessories may change without notice. Regular maintenance is essential for optimal performance. ColorJet is not liable for any damages related to the use or performance of its products. All trademarks and logos are the property of their respective owners.