



# VULCAN<sup>PRIME</sup>

*1.6m UV Roll-to-Roll Printer*

**64" UV Printer**



MULTIPLE DECO-SIGN APPLICATIONS  
**ENHANCED BUSINESS OPPORTUNITIES**



# New age Signage

FUTURISTIC SIGNAGE PRINTER IS HERE. **VULCAN PRIME** IS ONE-OF-ITS-KIND PRINTER THAT ENSURES FLAWLESSLY SHARP PRINTING FOR **INDOOR & OUTDOOR SIGNAGE**. ITS SUPERIOR TECHNOLOGY AND INNOVATION IS CAPABLE OF MAKING IMPOSSIBLE POSSIBLE.

## CAMOUFLAGE™

COLORJET'S **CAMOUFLAGE™ PRINTING TECHNOLOGY** UNLEASHES THE INCEPTIVE MAGIC OF 'PRINT-WITHIN-A PRINT'

Developed with the combination of ColorJet's UV printing machine – Vulcan Prime, Industrial grade advanced Print Head Technology, UV curable inks, special ICC profiles & unique Printer controller software, **Camouflage™ Technology** enables embedded image printing that displays-

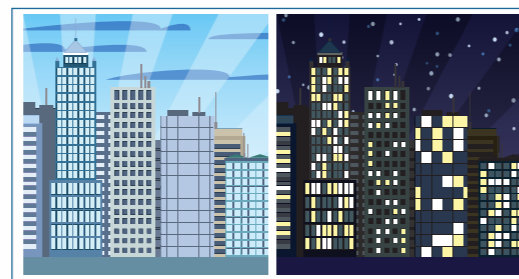
### 3 LAYER PRINTING Back to Back Printing

Back to back printing enhances the same visual effects of images on both frontlit and backlit without any color loss.



### 4 LAYER PRINTING Dual Color Day Night Effect Printing

Different versions of the same print printed on backlit media comes out under the influence of backlit LED light.



### 5 LAYER PRINTING Dual Creative Printing

Different images printed on the same transparent media (Dual creative) visible differently from both sides (Window graphics).



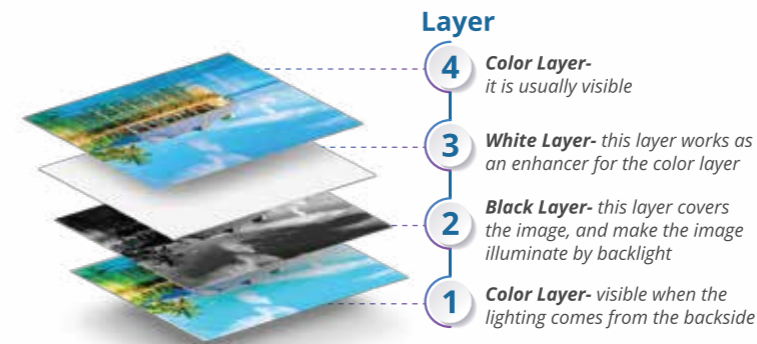
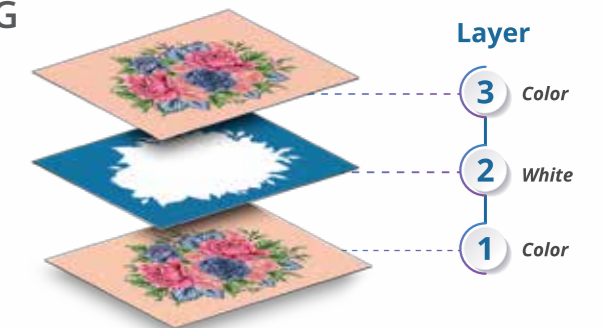
New Launch

## VULCAN PRIME 1.6m UV Roll-to-Roll Printer



### 3 LAYER PRINTING – BACK TO BACK PRINTING

In 3 Layer printing with **Vulcan Prime**, you can print color-white-color back to back printing, ensuring the same color intensity with both frontlit and backlit. With zero color loss, the signboards will be visible exactly the same during day and night. This is specially used for Glow signboards/Backlit media/Unipoles and Translites.

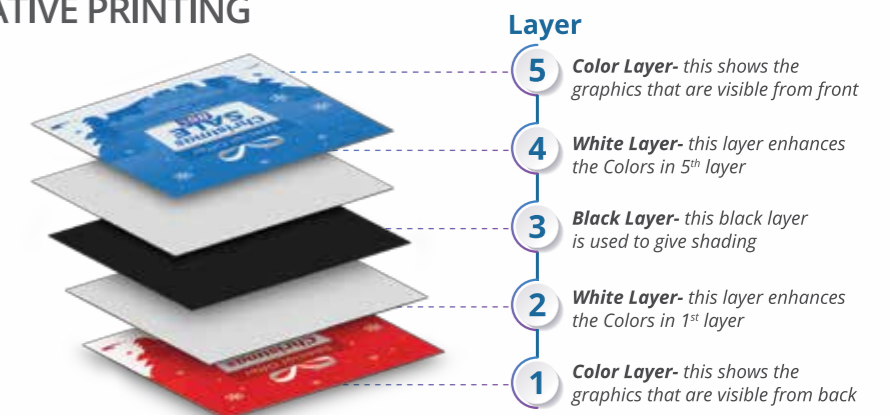


### 4 LAYER – DUAL COLOR/ DAY NIGHT EFFECT PRINTING

With 4 layer printing we can add depth to graphical images. The process is used for creating an effect between day time & night time. This process creates a visible change in the design with the influence of backlighting of four-layer print of- Color + Black + White + Color. With this printing technique an illumination can be created in desired areas in the images.

### 5 LAYER PRINTING – DUAL CREATIVE PRINTING










In a 5 layer printing process, the design or graphics can be seen in front and back, by just one-time printing. Five layer printing is done on a transparent sheet, where two different designs can be obtained on two different sides, for the purpose of indoor as well as for outdoor signage for windows or glass doors.

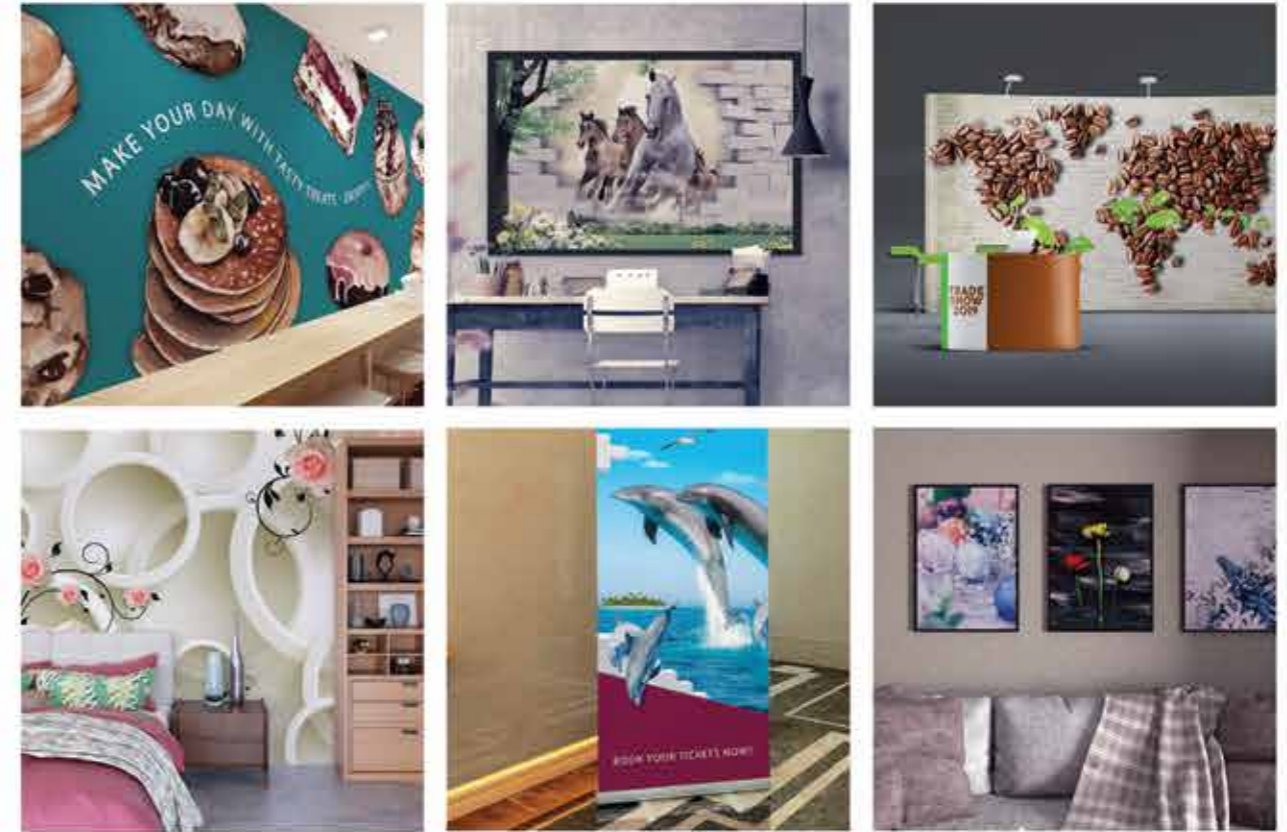




# Interior Decor

**VULCAN PRIME IS ALL SET TO DRIVE GROWTH IN THE RAPIDLY INCREASING INTERIOR DECOR DEMAND. WITH THE ABILITY TO CATER TO ENORMOUS RANGE OF WALL PAPER SUBSTRATE CHOICES, THE SCOPE OF APPLICATIONS HAS WIDENED TOO. WITH ITS EMBOSSED 3D EFFECTS PRINTS AND COMPLETELY SAFE UV CURABLE INKS, VULCAN PRIME WILL BE A GAME-CHANGER IN THE WORLD OF INTERIOR DECOR.**

-  Multilayer printing for unique 3D embossed effects up to 1mm.
-  Staggered print head configuration that offers the double speed as compared to competition
-  Faster drying with highly advanced UV CURING enables less 'design-to-production-usage' turnaround time
-  High quality prints at faster print productivity
-  Wider range of Print substrates that open up multitude of opportunities
-  High scrub resistant Super washable
-  Unique digitally controlled structure
-  High light fastness
-  Fire resistant



Wall Décor | Window Décor | Wall Decals | Wall Coverings | Indoor Signage | Wall Poster | Canvases | Exhibition booth decoration, and many more

**VULCAN PRIME**  
1.6m UV Roll-to-Roll Printer



**New Launch**





# VULCAN<sup>PRIME</sup>

- COLORJET'S advanced 1.6m UV roll to roll printer

ANGULAR  
UV LED  
CURING



PRINTING  
WIDTH UPTO  
1.6m



CRACK  
RESISTANT  
PRINTS



MULTI-LAYER  
PRINT  
FLEXIBILITY  
FOR HIGH QUALITY  
BACKLIT SIGNAGES



STANDARD  
TAKE UP ROLLER



C,M,Y,K,W  
INK COMPATIBILITY



BEST COST  
TO OUTPUT RATIO



INNUMERABLE  
PRINTING  
APPLICATIONS



ColorJet's Advanced Technology ensures wide range of advanced Printing Applications -

Ceiling Film, Vinyl, Advertising Banner (indoor & outdoor), Wall paper, Wall decal, Fabric, Backlit signage, Front lit signage and more.

SIMPLE  
OPERATION



ULTRA HIGH QUALITY  
MAX RESOLUTION  
2400dpi



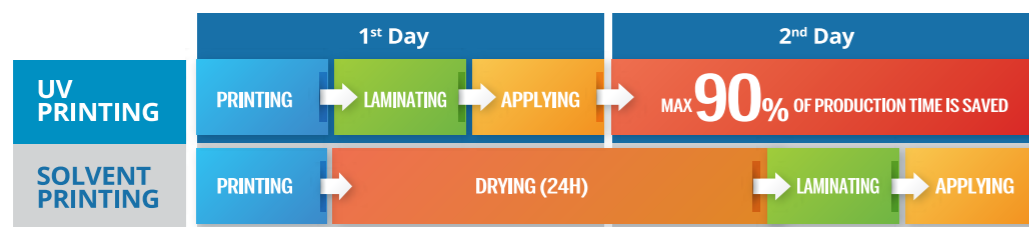
MAX  
PRINT SPEED  
14m<sup>2</sup>/h



## WHY UV LED OVER SOLVENT ?

- INSTANT DRY UV CURING

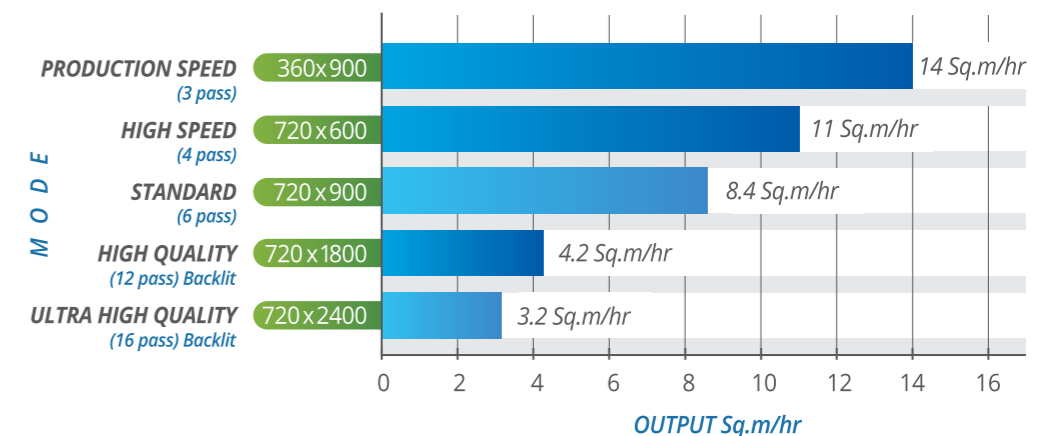
Fast curing with the UV ink properties ensures immediate drying upon the UV light irradiation. As a result, sign applying, as well as the post processing can be done without delay thus making it possible to undertake orders with tight deadlines as well. The entire process is resistant to ink blocking while printing by multi-layer or using white ink. Hence no worrying about the media stains and no requirement of an operator.



NO  
DRY TIME



VULCAN<sup>PRIME</sup>  
The Powerful  
Performer  
High-Speed  
Print Output



# COLORJET DELIVERS IMPECCABLE PRINT RESULTS & FLAWLESS SERVICE ACROSS THE WORLD

Latvia  
Lithuania

Spain  
Portugal

Italy

Greece

Turkey

Egypt

Saudi Arabia

Kuwait

Bahrain

Qatar

UAE

Oman

India

Nepal

Bangladesh

Thailand

Sri Lanka

Ethiopia

Uganda

Kenya

**India's No. 1**  
with over  
**4,000 installations**  
- IDC 2019 Q4  
Super Wide  
Format Report



#VOCAL FOR LOCAL

Australia

New Zealand

## SPECIFICATIONS

Vulcan Prime - V1607R				
		Variant 1	Variant 2	Variant 3
Printing Technology		Drop-on-demand, Piezo electric inkjet		
Print Heads		Industrial Grade Jetting Assemblies		
No. of Print Heads		2 (7 PL)	3 (7 PL)	3 (7 PL)
Media	Width	1650 mm		
	Thickness	Maximum 5 mm with liner		
	Roll Outer Diameter	Maximum 300 mm		
	Roll Weight	Maximum 75 kgs		
	Core Diameter	76.2mm (3 in)		
	Types	Ceiling Film, Vinyl, Advertising Banner, PET, wall paper, Fabric, and many more		
Printing Width		Maximum 1600 mm		
Ink	Types	UV Curable Ink		
	Colors	CMYK	CMYK + W ( In line )	CMYK +W(Staggered)
Printing Resolution (dots per inch)		Maximum 2400 dpi		
Distance Accuracy		Error of less than $\pm 0.1\%$ of distance travelled, or $\pm 0.1$ mm, whichever is greater		
Connectivity		High speed USB		
Power Requirements		AC 220 V $\pm 10\%$ , 7 A, 50/60 Hz		
Dimensions (Printer only)		3330mm x 937mm x 1506mm (LxWxH)		
RIP software		Onyx (Colorjet Edition)		
Weight		642 Kgs		
Environmental	Power ON	Temperature: 18 to 28°C Humidity: 35 to 45%RH (non-condensing)		
	Power OFF	Temperature: 5 to 40°C Humidity: 20 to 60%RH (non-condensing)		
Mode	DPI	Passes	Output Sq.m/hr	Output Sqft/hr
Mode 1	360 x 900	3 Pass	14	150
Mode 2	720 x 600	4 Pass	11	120
Mode 3	720 x 900	6 Pass	8.4	90
Mode 4	720 x 1200	8 Pass	6.5	69
Mode 5	720 x 1800	12 Pass	4.2	45
Mode 6	720 x 2400	16 Pass	3.2	34

\*The speeds mentioned above are for Color + White Staggered head configuration

## COLORJET GROUP

**INDIA** : B-195, Phase-II, Noida-201305 (U.P.), INDIA. T +91 120 4548195 | **DUBAI** : Block-A, Office No: 115, Hamsah Building, Karama, P.O. Box: 123360, Dubai-UAE. T 00971 43961744 | [sales@colorjetgroup.com](mailto:sales@colorjetgroup.com) | [www.colorjetgroup.com](http://www.colorjetgroup.com)

Accessories shown along with different printers in this brochure are not part of standard equipment. Color may vary from actual body color due to printing on paper. Colorjet reserves the right to change specifications without prior notice. All speed limits mentioned in this brochure were tested under special conditions. All trademarks, logos, symbols and designs depicted / mentioned in this brochure are trade names, trademarks and copyrights of their respective brand owners.